

# TAŞINABİLİR HOPARLÖR

GSB 1000



FOR A GOOD REASON

**GRUNDIG**

# CONTENTS

---

## 20 SAFETY PRECAUTIONS

- 21 Package information
- 21 Battery Warning
- 21 Compliance with WEEE Directive
- 21 Compliance with the Limitation of Prohibited Substance Usage
- 22 PCB Conformity
- 22 Things to Do for Energy Saving

## 23 GSB 1000

- 23 Contents of the box

## 24 OVERVIEW

## 25 GENERAL FEATURES


- 25 LED Indicator
- 25 Setting Bluetooth Speaker to Pairing Mode
- 26 Pairing the Speaker to the Phone
- 27 Pairing the Speaker to the Computer
- 29 Bluetooth Speaker Calling Functions
- 29 Answering Calls via Bluetooth Speaker
- 30 Playback Control when connected via Bluetooth
- 31 Charging the Speaker
- 31 AUX (Auxiliary Device) Connection
- 33 Resetting to the Speaker (Restoring Factory settings)
- 34 General Features
- 34 Compatibility

## 35 SPECIFICATIONS

## 36 TROUBLESHOOTING

# SAFETY PRECAUTIONS

---

- Please remember that movable objects in a moving vehicle may become lethal objects during an accident. Do not use this device in a moving vehicle as it is not possible to fix this device to the vehicle and as it may cause an accident by distracting you.
- This is a radio frequency device and it may affect the Electronic fuel injection, Electronic Braking System, ABS, Airbag systems in your vehicle and cause faulty operation or complete failure of these systems. Therefore, this device is not applicable for use inside a vehicle.
- Do not place the device close to heating units or under direct sunlight, or in a vehicle parked under sunlight.
- Do not place any objects such as burning candles on the device. 
- Do not attempt to remove the non-user-replaceable battery.
- Battery may explode in case of an error during replacement. Have the battery replaced by Authorized Service personnel with batteries of the same type and quality.
- Do not expose the battery to heat sources such as sunlight, heaters, fire etc. against risk of overheating.
- Protect the device against humidity (water drops or spills). Do not use the device in damp conditions or in rainy weather outside. Do not place objects such as bottles, filled glasses, vases etc.; these may be tipped over and damage the device by causing water ingress inside the device.
- Do not open the cover of the device; do not attempt to repair it by yourself. Contact Authorized Services for any repair and part replacement.
- Do not use chemical cleaning agents as these may cause damage on the casing of the device. Just clean the device with a damp cloth.

# SAFETY PRECAUTIONS

---

## Package information!

Packaging materials of the product are manufactured from recyclable materials in accordance with our National Environment Regulations. Do not dispose of the packaging materials together with the domestic or other wastes. Take them to the packaging material collection points designated by the local authorities.

## Battery Warning!

In accordance with our National Environment Regulation, the battery included in the product must be appropriately recycled or disposed of at a waste battery box specified by the local authority. Charge or replace the battery as specified in the operation manual. Please consult the local authorized service to recycle the battery.

## Compliance with WEEE Directive



This appliance's packaging material is recyclable. Help recycle it and protect the environment by dropping it off in the municipal receptacles provided for this purpose. Your appliance also contains a great amount of recyclable material. It is marked with this label to indicate the used appliances that should not be mixed with other waste. This way, the appliance recycling organised by your manufacturer will be done under the best possible conditions, in compliance with European Directive 2002/96/EC on Waste Electrical and Electronic Equipment. Contact your town hall or your retailer for the used appliance collection points closest to your home. We thank you doing your part to protect the environment.

## Compliance with the Limitation of Prohibited Substance Usage:

It complies with EEE Directive. The product you have bought does not include any harmful and prohibited materials specified in the "Regulation for Limitation of Usage of Some Prohibited Substances in Electric and Electronic Appliances" published by the Ministry of Environment and Urban Planning in the Official Gazette issue 26891 dated 30.05.2008.

# SAFETY PRECAUTIONS

---

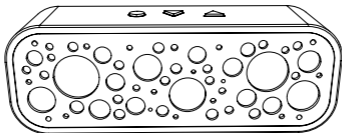
## PCB Conformity:

"It does not contain PCB (polychlorinated biphenyl)."

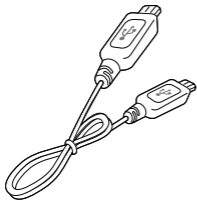
## Things to Do for Energy Saving

- As your portable speaker includes internal battery, turn it off by turning the power switch to OFF position when it is not in use.
- We recommend using of cable connection via AUX, if possible, when you wish to use it on your computer or in close distance. As your speaker is of active type, we would like to remind you that it will consume power in cable connection also, however this consumption will not be as much as the wireless connection.
- Before using your speaker with cable connection, disconnect the Bluetooth connection via the device if there is any bluetooth device paired with your speaker.
- We recommend charging when the device is off, because charging process which takes short time cause less power consumption.
- Turning the volume of your speaker up and track changing processes made via the speaker affect power consumption negatively.
- The more the distance between your speaker and Telephone or power supply during wireless usage, the more the power consumption is. Moreover, as leaving the speaker in mapping mode for a long time and turning the speaker on and off will browse bluetooth devices everytime you perform these, power consumption will be negatively affected

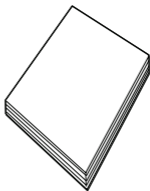
## Contents of the box



Bluetooth Speaker



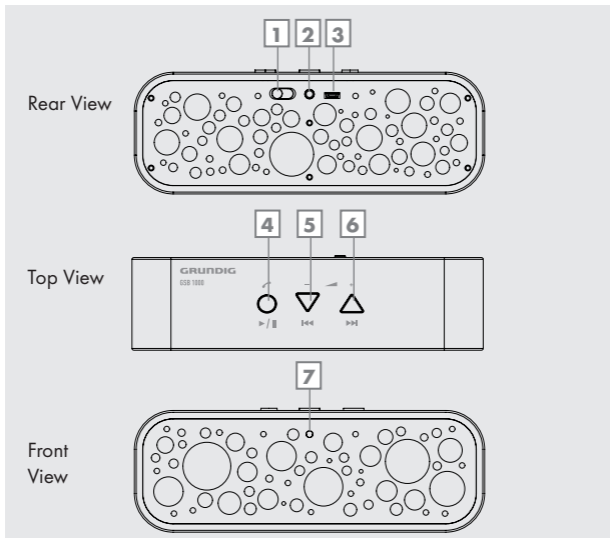
USB charging cord



Quick Operation Manual

The information in this manual and contents of the package may be changed without prior notice.

# OVERVIEW



- |          |                            |          |                                    |
|----------|----------------------------|----------|------------------------------------|
| <b>1</b> | ON/OFF                     | <b>5</b> | Volume (-) / BACK (Previous track) |
| <b>2</b> | AUX Input                  | <b>6</b> | Volume (+) / FORWARD (Next track)  |
| <b>3</b> | USB input for recharging   | <b>7</b> | LED Status indicator               |
| <b>4</b> | Answer a call (Play/Pause) |          |                                    |

# GENERAL FEATURES

---

## LED Indicator

A LED light is available on the center of the front side of the device.

Statuses indicated by the Bluetooth Speaker LED light and their descriptions are provided below.

LED Off - Speaker Off

Flashes BLUE - Speaker on

Flashes BLUE/RED - Synchronization mode

Flashes RED - Low battery level

Solid BLUE - Speaker fully charged

Solid RED - Speaker is being charged

Bluetooth Setting and Pairing for Playing and Hands-free calling

### Note:

- Bluetooth Speaker may be paired with most Bluetooth 2.0 devices. Pairing procedure may change according to the device.
- See the user's manual of your Bluetooth device for pairing instructions.

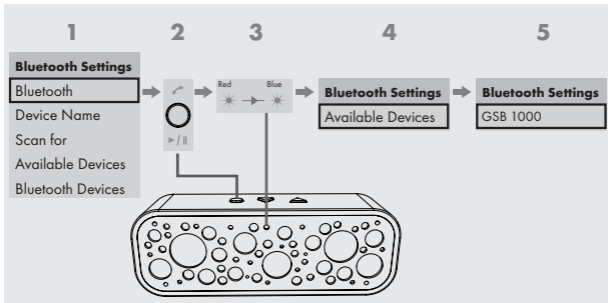
## Setting Bluetooth Speaker to Pairing Mode

- 1 Turn the »ON/OFF« button on the rear side of the Bluetooth Speaker to "ON".
- 2 Press and hold the »●« button on Bluetooth Speaker until the light on the front side starts to flash in red and blue. This light indicates that the device is in pairing mode.
- 3 Turn on the Bluetooth feature of your phone. Go to Bluetooth devices and select »Add new device«. Once your phone recognizes the speaker select »GSB 1000« from the found devices list. Some phones prompt for a pairing code, then enter »0000« from your phone.



# GENERAL FEATURES

## Pairing the Speaker to the Phone



### Note:

■ Menu illustrations on the 1st, 4th and 5th steps on the figure above are for informative purposes only; settings and menu names on your phone may differ.

- 1** Enter the Settings menu of your phone and activate Bluetooth feature.
- 2** Press and hold the pairing button on the speaker for 3 seconds. Led indicator shall flash quickly in blue and red respectively. This means that your speaker is ready for pairing mode.
- 3** Select Search for device in the Bluetooth settings of your phone and start the search. Found device shall be displayed as GSB 1000.
- 4** Connect by selecting GSB 1000 from the found devices list. Some phones may prompt for a pairing code. Enter "0000" if you are prompted for a code.

# GENERAL FEATURES

---

- 5 After completing the device connection procedure, you may listen to any track from the track list of your phone with your bluetooth speakers.

## Note:

- Try again by removing the other devices on the device list of your phone if adding device procedure fails. If it is not possible to add the device despite all your attempts, refer to the manual provided by the manufacturer of your equipment or visit the web page for up-to-date software.
- Your speaker only allows listening to the track that is being played on your phone wirelessly; you cannot operate your speaker to transfer the track as sending the track data from the track list of your phone to another device via bluetooth.

## Pairing the Speaker to the Computer

- 1 Press and hold the »●«button on Bluetooth Speaker until the light on the front side starts to flash in red and blue. This light indicated that the device is in pairing mode.
- 2 Turn on »Wireless« feature of your computer. Then, select MY COMPUTER > CONTROL PANEL > DEVICES AND PRINTERS and »Add a new device« and start searching for a new device.
- 3 Once your computer recognizes the speaker select »GSB 1000« from the found devices list, and click »NEXT« . Your computer shall attempt to connect to the new device and install it automatically. A confirmation window shall be displayed when the installation is completed. Then, the device is registered.

# GENERAL FEATURES

---

- 4 If you cannot hear a sound despite having your speaker recognized by computer: Some computers with internal Bluetooth or USB dongle may require that this procedure shall be performed manually. For example, you may have to select »GSB 1000« manually from MY COMPUTER > CONTROL PANEL > SOUND EFFECTS > AUDIO DEVICES.

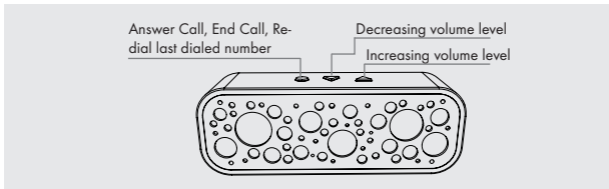
## Note:

- Bluetooth Speaker shall stay in pairing mode for 3 minutes. If you do not perform the following steps turn the »**ON/OFF**« button of the Bluetooth Speaker to OFF position and then to ON position and repeat the 2nd step.
- If you deactivate the device connection over speaker inadvertently, turn the »**ON/OFF**« button of the Bluetooth Speaker to OFF position and then to ON position. Your phone shall recognize the phone automatically.
- Procedures for adding a device via Bluetooth and Bluetooth activation settings may differ in some computers and operating systems. Refer to the manual provided by the manufacturer if adding device procedure fails.
- Bluetooth driver of your computer may be out-of-date if you cannot hear a sound from your speaker despite having your computer recognize the Bluetooth Speaker. Device driver can be found in the web site of the manufacturer.

# GENERAL FEATURES

---

## Bluetooth Speaker Calling Functions



### Answering Calls via Bluetooth Speaker

Bluetooth Speaker shall play a warning sound when you receive a call.

Music is paused automatically if you are listening to music from your phone. Then, the track is played from the position it has been paused when you have ended the call.

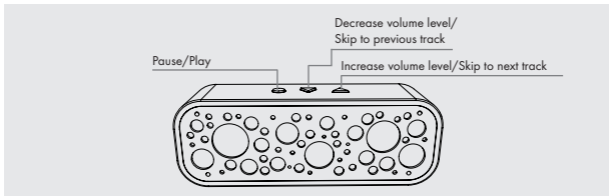
**To accept the call:** You can accept the call by the controls on the phone as usual or press the »●« button on the Bluetooth Speaker. Just speak as usual. You shall hear the calling party from the speaker and your voice is transferred by the internal microphone.

**To end the call:** Use the »End call« button on your phone or press the »●« button on the Bluetooth Speaker.

**To go to the last call:** Press »●« button twice to call the last called number. Bluetooth Speaker shall play a warning sound at this time.

# GENERAL FEATURES

## Playback Control when connected via Bluetooth



### Volume:

Use the volume controls on the upper side of the Bluetooth Speaker and press »▲« button to increase volume and press the »▼« button to decrease volume.

### Pausing:

To pause the track being played, press »●« button; then, press the same button again to continue playing the track.

### Playback Control:

Press and hold the »▼/▲« button on the speaker for 2 seconds to skip to the previous or next track.

### Note:

- Bluetooth connection is deactivated if you press »●« button for more than 1 second.
- Controls for pausing or playing music and volume controls may not be supported on some phones or computers depending on the Bluetooth driver.

# GENERAL FEATURES

---

## Charging the Speaker

Connect the Micro USB end of the USB cord provided with the product to the USB connection port marked with »« behind the Bluetooth Speaker.

Connect the other end to the USB connection port on your computer or other devices that allow USB charging.

LED light is illuminated in RED. Then, it turns to BLUE. Charging time for a fully discharged battery is 3 hours.

### Warning:

- Speaker shall be recharged periodically or at maximum 3 months if it will not be used for an extended period. Due to their nature, lithium-ion batteries lose their charging capabilities and their service life is shortened when they are not recharged for an extended period.

## AUX (Auxiliary Device) Connection

Your device has a 3.5 mm »**Aux**« input to allow connection of external MP3 players, iPods, portable CD players and PSPs.



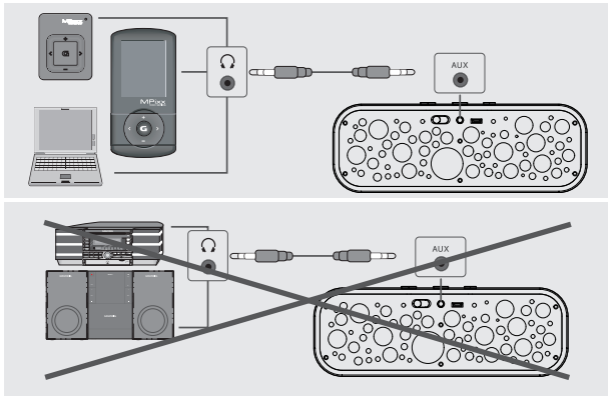
Connect one end of the 3.5 mm stereo audio cable into the »**Aux**« jack and other end of the cable to your MP3 player to perform »**Aux**« connection to your Bluetooth Speaker.

### Note:

- When your device is connected by »**Aux**« volume and playback controls are performed by the other Source device (mp3, PC etc.). Volume control and other controls on the speaker are deactivated.

# GENERAL FEATURES

- Connect the »**Aux**« input of your speaker to the headphone output of devices with low audio power output, such as MP3/MP4 player, portable CD player or notebook. Never connect it to the headphone output of amplifiers or audio sets. Otherwise, driver units of the speaker may be damaged.



- Volume setting of the device that shall be connected via »**Aux**« input shall be at minimum or off during the connection of the cable. Otherwise, driver units of the speaker may be damaged due to noise or increasing of the volume level abruptly.

# GENERAL FEATURES

---

## **Resetting to the Speaker (Restoring Factory settings)**

You may restore your device to factory settings in case of a pairing problem. The devices that have been introduced to the speaker shall be removed at this time. Press and hold the Up »▲« button on the speaker for 8 seconds to reset. Led status indicator shall flash in red and blue. Finally, turn the speaker off and on with the Power button behind the speaker.



# GENERAL FEATURES

---

## General Features

- Internal microphone with advanced noise reduction feature provides hands-free calling and conference-calling.
- Easy recharging with the mini USB charging cord supplied with the speaker.
- Lithium-ion rechargeable battery up to 10 hours playing time.
- Can be connected to iPods or any other devices with 3.5 mm headphone jack using a mini jack cable (cable is not supplied with the speaker).
- Auto-search and auto-reconnect with compatible devices.

## Compatibility

- Wireless: Smartphones and computers with Bluetooth feature such as iPad, iPhone and devices with Bluetooth 2.0 or higher.
- Wired: Devices with standard 3.5 headphone output such as iPod with the 3.5 mm mini jack cable (cable is not supplied with the device).

# SPECIFICATIONS

---

Function:	Bluetooth Speaker, Conference Call
Operating Frequency:	2,4 GHz ~ 2,48 GHz unlicensed ISM band
Service Distance:	10 m active distance
LED Indicator:	2 Color LED (Bluetooth Status, Charge Status indication)
Speaker:	Stereo speaker, Output power 3W
Bluetooth profile:	A2DP, AVRCP, HFP, HSP
Microphone:	Built-in microphone
Battery:	Built-in lithium polymer
Operating Time:	Standby: Maximum 100 hours, Music: Maximum 10 hours, Conference call: Maximum 10 hours
Recharging Time:	USB Recharge: Approximately 3 hours
Dimensions:	222 x 110 x 60 mm
Weight:	560 g

# TROUBLESHOOTING

---

## **Volume too low or no sound**

- Please check the Bluetooth Speaker or Bluetooth device.

## **No sound from the Speaker in AUX (Auxiliary) Connection**

- Ensure that the mini jack cable is connected properly to Bluetooth Speaker if you are using the 3.5 mm jack.

## **Device plays music, but it is not transferred to Bluetooth Speaker**

- Ensure that your Bluetooth device has A2DP feature (refer to the user's manual of your device).
- Ensure that your device has been paired.
- Ensure that the mini jack cable is connected properly to Bluetooth Speaker and LED light on the device is lit if you are using the 3.5 mm jack.

## **Hands-free call does not operate with the mobile phone**

- Ensure that the power button of the Bluetooth Speaker is ON.
- Ensure that the Bluetooth Speaker is charged.
- Ensure that your mobile phone supports HSP (Headphone profile) / HFP (Hands-Free Profile).
- Ensure that your mobile phone has been paired.
- Please check the volume on Bluetooth Speaker.

# R&TTE Declaration of Conformity (DoC)

No: 2012/02

We,

Arçelik A.Ş.  
Sütlüce Karaağaç Cad. No:2/6  
Beyoğlu, İstanbul, Türkiye

declare under our sole responsibility that the product:  
GSB 1000  
Bluetooth Portable Speaker

to which this declaration relates is in conformity with the essential requirements and other relevant requirements of the R&TTE Directive (1999/5/EC).

The product is in conformity with the following standards and/or other normative documents:

Madde 3.1.a SAFETY:	EN 60950-1:2006+A11+A1 EN 60065:2002+A1:2006+A11:2008+A2:2010
Madde 3.1.b EMC:	EN 55013:2001+A1:2003+A2:2006 EN 55020:2007 EN 301489-1 V1.8.1:2008 EN 301489-17 V2.1.1:2009
Art 3.2 Radio:	EN 300328 V1.7.1:2006 EN 50371:2002

NOTIFIED BODY INVOLVED:  
TÜV Rheinland LGA Products GmbH  
Tillystraße 2  
90431 Nürnberg Germany

PLACE AND DATE OF ISSUE: ISTANBUL, 19.11.2012

YEKTA URAL  
Quality Assurance Manager

Arçelik A.Ş.

